

Franklin County Urban ROOTS

An Exploration Experience for Urban Youth

A collaboration with the Franklin County Board of Commissioners, The Ohio State University, the College of Food, Agricultural, and Environmental Sciences (CFAES), OSU Extension Franklin County, and local community partners.

Eighth graders from the urban core of Franklin County will experience hands-on and immersive learning opportunities that focus on food, agriculture, the environment, and related technologies in their lives.

The experiential program includes:

- Year-round campus and community educational programs
- Neighborhood-based youth and family engagement
- Open house visits to connect the university and community
- Bus tours to events, such as the Franklin County Fair and Farm Science Review
- Five-day summer camp on campus

Urban ROOTS is open to all Franklin County eighth graders, with priority given to students from the **Columbus, Whitehall, South-Western & Reynoldsburg** school districts.

Collaborative

The dynamic curriculum includes a series of interactive guides, experiences, and resources for youth, families, educators, community leaders, and volunteers.

Innovative

Continual innovation will come through the guidance of youth, the emergence of new opportunities, and program evaluation.

Trusted

OSU Extension demonstrates best practices with youth safety, respectful community engagement, and dynamic camp operations.

Contact: Ohio State University Extension, Franklin County Urban ROOTS Team, urbanroots@osu.edu

<https://go.osu.edu/urbanrootsapplication>



ROOTS - Reshaping Outreach Opportunities Through Self-Discovery



OSU Extension, Franklin County

Building Better Lives, Better Businesses, Better Communities

OSU Extension is the outreach arm of The Ohio State University, rooted in the College of Food, Agricultural, and Environmental Sciences (CFAES). With a dedicated presence in each of Ohio's 88 counties, OSU Extension works with community and university partners on local priorities.

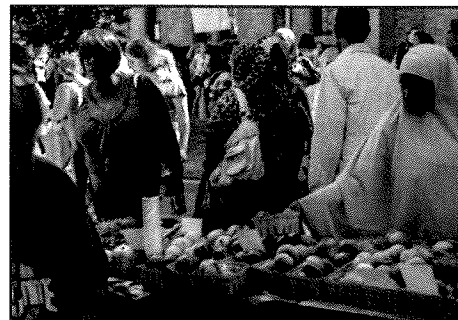


Our Vision

Ohioans have the knowledge and resources they need to actively engage in creating conditions in which they thrive.

Our Mission

We create opportunities for people to explore how science-based knowledge can improve social, economic, and environmental conditions.



Our Programs

OSU Extension, Franklin County engages with residents of all ages in lifelong learning – from children and seniors, to farmers and other business owners, to elected officials and other community leaders. The OSU Extension team addresses what matters most to people in the county through interdisciplinary approaches from the core program areas of 4-H Youth Development, Agriculture and Natural Resources, Community Development, and Family and Consumer Sciences. The team taps into college, university, community, and national networks to benefit Franklin County.

Priorities include:

- Economic and Workforce Development
- Health and Wellness
- Environment and Agricultural Sustainability
- Community Capacity Building
- Family, Parenting, and 4-H Youth Development
- Diversity, Equity, and Inclusion
- Financial Management

Kunz-Brundige Franklin County Extension Building
2548 Carmack Road, Columbus, Ohio 43210



Below is our application QR code and link to sign up for Urban ROOTS.
<https://go.osu.edu/urbanrootsapplication>

